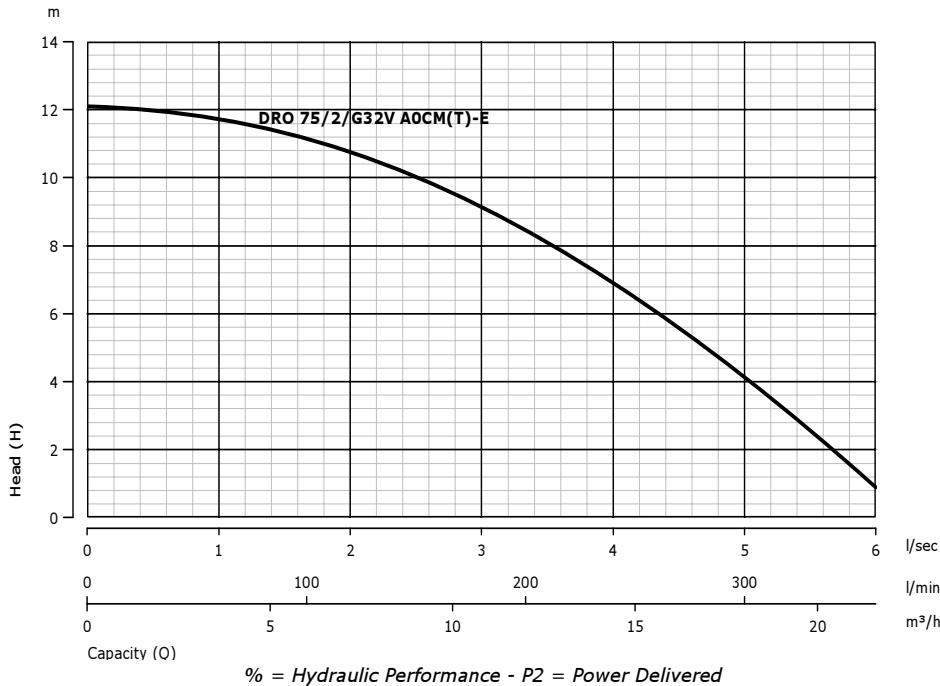
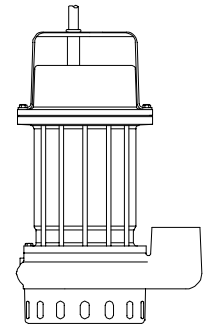


**DRO 75/2/G32V A0CM-E**Hydraulic model:  
**"A"**

ACTUAL OUTLINE

**Hydraulic type:**

Multi-channel open high performance impeller\*

**Power/poles:**

0,55 kW - 2 Poles

**Outlet type:**

1 ¼" vertical gas threaded opening

**Explosion-proof:**

Pump in NOT ex-proof version

**Free passage of solid bodies:**

Strainer holes ( 10x20 mm)

**ELECTRO-MECHANICAL UNIT**

Rated delivered power:	0,55 kW	Motor poles/revolutions:	2900 1/min - 2Poles
Rated absorbed power:	0,86 kW	Motor phases:	M - Single-phase
Rated absorbed current:	3,9 A	Service:	S1 submersible or w/sleeve
Starting current:	Not available	Motor protection:	IP 68
Starting torque:	Not available	Insulation class (ICL):	F
Rated Cos Ø:	0,96	Max. Starts per hour:	20
Rated motor performance:	64%	Standard cable type:	5 mt-H07RN-F 4G1
Detailed description of series:	Submersible pumps consisting of a EN-GJL-250 cast iron electromechanical unit intended for submersible operation, equipped with 2 conventionally installed mechanical seals. Oil filled motor. Separate hydraulic unit. Explosion-proof version not available.*		
Standard mechanical seals	1 mechanical silicon carbide (Viton) seal and 1 mechanical graphite alumina (NBR) seal		
Lifting:	With handle on motor cover		
Ball bearings:	Upper permanently lubricated ball bearing, lower oil-immersed ball bearing		
Winding type:	Induction motor with oil-filled winding and automatic overload protection		
Impregnation type:	Doubly impregnated humidity-resistant winding		
Direction of rotation:	Clockwise seen from top of electric pump		

Data provided above refers to hydraulic tests carried out at: 230 Volt 50 Hz

**MATERIALS**

<b>Mechanical unit:</b>	EN-GJL-250 cast iron	<b>Hyd. Unit, impeller:</b>	EN-GJL-250 cast iron
<b>Shaft:</b>	X6Cr13 (AISI416) steel	<b>Bolts and Screws:</b>	INOX A2 steel
<b>Seals (O-Ring):</b>	NBR-SBR rubber	<b>Grinder cutter:</b>	Not applicable
<b>**Cooling jacket:</b>	Not applicable	<b>Painting:</b>	Ecological epoxy vinyl

\*\* Cooling jacket supplied upon request in series specified

**LIMITS ON USE  
REFERENCE STANDARDS**

<b>Max. operating temp.:</b>	40 °C	<b>Max. sub. depth:</b>	20 m
<b>Liquid PH:</b>	6 to 10	<b>Liquid density:</b>	1 kg/dm <sup>3</sup>
<b>Viscosity of liquid:</b>	1 mm <sup>2</sup> /s	<b>Max. acoustic press.:</b>	< 70 dB dB

**Reference standards:**

- EN 292-1; EN 292-2; CEI EN 60529; ISO 9906; CEI EN 60034-1.
- CEI EN 60204; UNI ISO 6009; UNI EN 1561-1563; UNI EN 10098.
- Low voltage directive 73/23/CEE.
- Procedures specified by Zenit S.p.a. Quality System, UNI EN ISO 9001 (ISO 9001) certified, DNV n. SQ 0660-IT certified.
- Machines directive 89/392/CEE and successive amendments thereto (directives 91/368/CEE, 93/68/CEE), electromagnetic compatibility directive 89/336/CEE

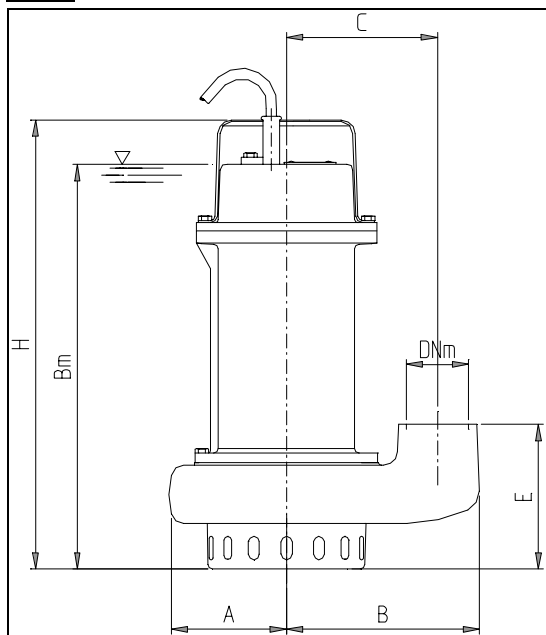
**SYMBOLS**

Product complying with European standards in force

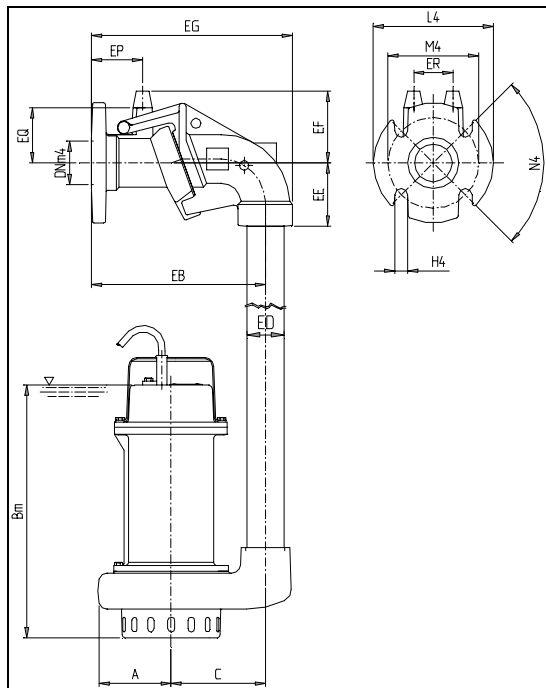
Company Quality System complying with UNI ISO norm



<b>VARIANTS AVAILABLE</b>	<b>Electrical accessories</b>	
	<i>T</i>	Thermistor
	<i>TCST</i>	Thermistor, capacitor, starter box and overload protection
	<i>TCSGT</i>	Thermistor, capacitor, starter box, float and overload protection
	<i>TCSGLT</i>	Thermistor, capacitor, starter box, 0.5 m float and overload protection
	<b>Set of mechanical seals</b>	
	<i>SICAL</i>	1 mechanical silicon carbide (Viton) seal and 1 mechanical graphite alumina (NBR) seal
<i>2SIC</i>	2 mechanical silicon carbide (Viton) seals	
<b>Cooling system / mechanical seal flushing versions*</b>		
<i>N</i>	No sleeve and/or seal flushing	



A	B	Bm	C	DNm	DNm4	E
78	132	290	103	1¼	2	110
EB	ED	EE	EF	EG	EP	EQ
240	1¼-2	87	98.5	278	70.5	75.5
ER	H	H4	L4	M4		
54	335	18	165	125		



• These drawings do not represent actual product appearance. Refer to the outline on the previous page.

Dimensions 'mm' except than: DNm-inches DNm4-inches ED-inches	<b>Mass:</b> 15,5 Kg	<b>Possible installations:</b>	I1-I2-I3
---	----------------------	--------------------------------	----------

\*For more information see the descriptive sections